



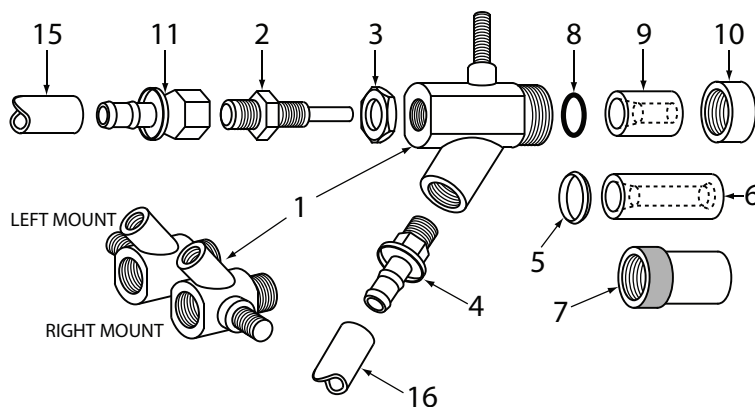
PARTS CHECKLIST

Be Sure The Part You Need Is The Part You Get



Clemco/Zero Style New Style Automatic Gun & Parts

Customer PO #: _____
 Company Name: _____
 Contact Name: _____



Line #		
<input type="checkbox"/>	1	 1655-920 GUN, AUTO, LEFT MOUNT, NEW STYLE
<input type="checkbox"/>	1	 1655-930 GUN, AUTO, CENTER MOUNT, NEW STYLE
<input type="checkbox"/>	1	 1655-940 GUN, AUTO, RIGHT MOUNT, NEW STYLE
<input type="checkbox"/>	1	 1655-950 GUN, AUTO, LESS MOUNT, NEW STYLE
<input type="checkbox"/>	2	 1349-470 ORIFICE, 1/8", NEW STYLE
<input type="checkbox"/>	2	 1349-480 ORIFICE, 5/32", NEW STYLE
<input type="checkbox"/>	2	 1349-490 ORIFICE, 3/16", NEW STYLE
<input type="checkbox"/>	2	 1349-500 ORIFICE, 7/32", NEW STYLE
<input type="checkbox"/>	2	 1349-510 ORIFICE, 1/4", NEW STYLE






Line #		
<input type="checkbox"/>	3	 1347-2660 NUT, LOCKING HEX
<input type="checkbox"/>	4	 1219-340 FITTING, 1/2" BARB STEM
<input type="checkbox"/>	5	 1424-480 RETAINING RING, WIDE SPRAY
<input type="checkbox"/>	6	 1348-1820 NOZZLE, TUNGSTEN CARBIDE, STRAIGHT BORE, WIDE SPRAY, 3/8" BORE
<input type="checkbox"/>	6	 1348-590 NOZZLE, BORON CARBIDE, STRAIGHT BORE, WIDE SPRAY, 5/16" BORE
<input type="checkbox"/>	6	 1348-600 NOZZLE, BORON CARBIDE, STRAIGHT BORE, WIDE SPRAY, 3/8" BORE
<input type="checkbox"/>	6	 1348-610 NOZZLE, BORON CARBIDE, STRAIGHT BORE, WIDE SPRAY, 7/16" BORE
<input type="checkbox"/>	6	 1348-615 NOZZLE, BORON CARBIDE, STRAIGHT BORE, WIDE SPRAY, 1/2" BORE
<input type="checkbox"/>	7	 1661-60 GUARD, WIDE SPRAY NOZZLE



PARTS CHECKLIST

Be Sure The Part You Need Is The Part You Get



Line #		
<input type="checkbox"/> 8		1423-70 O-RING
<input type="checkbox"/> 9		1348-380 NOZZLE, CERAMIC, STRAIGHT BORE, GUN INSERT, 5/16" BORE
<input type="checkbox"/> 9		1348-390 NOZZLE, CERAMIC, STRAIGHT BORE, GUN INSERT, 3/8" BORE
<input type="checkbox"/> 9		1348-450 NOZZLE, TUNGSTEN CARBIDE, STRAIGHT BORE, GUN INSERT, 5/16" BORE
<input type="checkbox"/> 9		1348-1400 NOZZLE, TUNGSTEN CARBIDE, STRAIGHT BORE, GUN INSERT, 3/8" BORE
<input type="checkbox"/> 9		1348-1040 NOZZLE, TUNGSTEN CARBIDE, STRAIGHT BORE, GUN INSERT, 7/16" BORE
<input type="checkbox"/> 9		1348-1000 NOZZLE, TUNGSTEN CARBIDE, STRAIGHT BORE, GUN INSERT, 1/2" BORE
<input type="checkbox"/> 9		1348-630 NOZZLE, BORON CARBIDE, STRAIGHT BORE, GUN INSERT, 5/16" BORE
<input type="checkbox"/> 9		1348-640 NOZZLE, BORON CARBIDE, STRAIGHT BORE, GUN INSERT, 3/8" BORE

Line #		
<input type="checkbox"/> 9		1348-650 NOZZLE, BORON CARBIDE, STRAIGHT BORE, GUN INSERT, 7/16" BORE
<input type="checkbox"/> 9		1348-1090 NOZZLE, BORON CARBIDE, STRAIGHT BORE, GUN INSERT, 1/2" BORE
<input type="checkbox"/> 10		1347-1240 NUT, NOZZLE HOLDING
<input type="checkbox"/> 10		1347-1510 NUT, NOZZLE HOLDING, WIDE SPRAY
<input type="checkbox"/> 11		1219-300 FITTING, 1/2" SWIVEL x 1/2" PUSH LOK
<input type="checkbox"/> 11		1219-350 FITTING, 1/2" SWIVEL TO 3/8" BARB
<input type="checkbox"/> 15		112-4720 HOSE, AIR, 1/2" INSTAGRIP
<input type="checkbox"/> 16		112-4760 HOSE, SUCTION, 1/2" URETHANE
<input type="checkbox"/> 16		112-4710 HOSE, SUCTION, BLACK, NOM. ID 1/2" x 15/16" OD, 2 PLY, PRICE PER FOOT, SECTION SIZE 400'

Proudly Distributed By

**To order parts, fill out this checklist and
contact your Forecast Sales, Inc. Distributor**

If you currently do not have a distributor, use the
"Distributor Locator" tool on our website to find
your 3 closest locations.